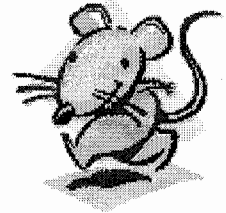


GOT A BETTER MOUSE TRAP?

Editor's Note: The LTAP Director challenged our readers to submit descriptions of devices or machine modifications they invented for improved operations so that everyone can gain from the fruits of local creativity. Our features for this quarter were submitted by the Counties of Hawaii and Maui. We hope that other counties will submit their devices to be featured in future issues.



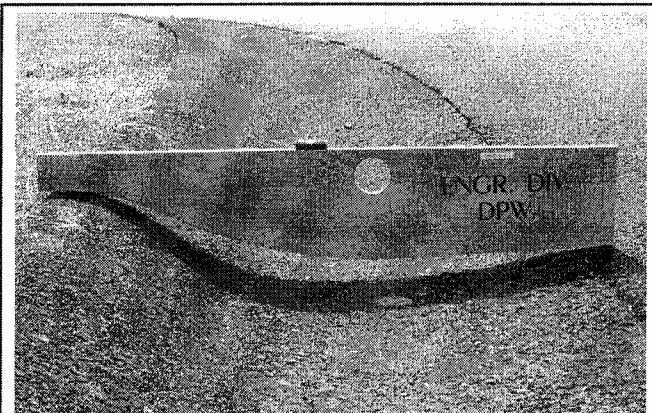
ROLLED CURB TEMPLATE

Submitted by: Ben Ishii
Inventor: Perry Harada
County of Hawaii

Problem: The inspection of rolled curbs for compliance with our standard detail proved to be difficult due to the curved surfaces involved. Field inspection was normally checked with a level and a tape rule which sometimes resulted in acceptance of substandard construction. When the rolled curbs were not constructed properly, homeowners often complained that their cars had a difficult time traversing the rolled curb fronting their driveway and their vehicles required realignment. In other cases, gutter capacity was reduced and the potential for runoff entering private property was increased.

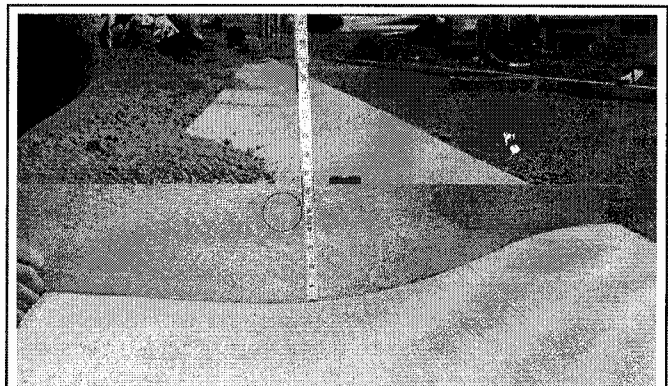
Template Description: The template is constructed out of 1/2" mahogany plywood which is finished with two coats of varnish. Plywood was selected due to its ease of fabrication and its light weight. A 2 inch hole was drilled into the center of the top section for easy carrying. The template length is constructed approximately one inch longer on each end to aid in checking the formwork. Vertical lines are drawn on each side to indicate the actual limits of the rolled curb. A tubular level vial was also mounted onto the top edge of the template to eliminate the use of a separate level.

Results: The templates are currently being used by each inspector in our Division. Rolled curbs are now being constructed within acceptable tolerance limits. Many Contractors have also duplicated our templates to use as a tool in the construction of their forms.



Typical rolled curb construction before the use of the inspection template.

Solution: Our Senior Inspector, **Perry Harada**, suggested that a template be fabricated to make the inspection easier and faster. The template would be used to check the formwork as well as the finished product.



Current rolled curb construction with the use of the inspection template.